



VITREKS

Atlantik

WWW.VITREKS.COM



Ljubomira Nikolića 12
Palilula, 18106 Niš,
Srbija



www.vitreks.com
info@vitreks.com



+381 18 237142
+381 18 228551
+381 64 1164150

Briefly about us

Company **Vitreks Niš** was founded in 1994. It is organized as an LTD, and it's dealing with the distribution of pipe repair clamps and couplings.

Owner of company, **Mr. Goran Jovanovic**, is also the owner of manufacturing operations "**Atlantik**" in Gornji Barbeš (South Serbia), this makes the LTD "**Vitreks**" to be authorized for the wholesale of "**Atlantik**" pipe repair clamps and couplings in the country and abroad, without any restrictions.

Years of experience in clamps production, inventions follow up, as well as readiness to accept the suggestions of customers, have contributed that "**Atlantik**" pipe fittings become and remain the fastest and most reliable solution in overcoming the problems of water supply in urban areas. Usage of the mentioned pipe clamps and couplings will insure lasting reduction of losses in the water supply network, as well as significant savings in production and distribution of water.

Our customers are mostly public utility companies, dealing with the water supply, and we cooperate with 60 water supply companies in the country and 40 abroad. Apart from Serbia, we are also present in the markets of Slovenia, Macedonia, Bosnia and Herzegovina, Montenegro and Bulgaria. Orientation of the company is further expansion of the market, as well as new product development, which would facilitate the maintenance of water systems.



Pipe repair clamps "Atlantik"

Pipe repair clamps Atlantik are used for permanent reparation of broken and damaged pipes.

These allow quick and cost-effective interventions in steel, cast-iron, asbestos cement, PVC, PE pipes and other materials. They are produced for pipes of various diameters, from 1/2" to DN 1200 mm, available lengths are from 100 to 400 mm.

Pipe repair clamps are made out of stainless steel band (AISI 304 quality), in the thickness of 1 mm for the "Atlantik" clamps, and out of 0.8 mm sheet metal for the "Vektor" clamps. Both ends of the clamp are reinforced by a stainless steel sheet of the same quality, with the thickness of 3 mm. Clamp is fully lined on the inside face with a 7 mm rubber gasket. The used rubber has 60 shore hardness, and is molded for each dimension separately.

Interior of the rubber is molded - divided into the chambers in the form of square, each measuring 5x5 mm, with a depth of 2 mm, which ensures the good seal, even with oval tubes with uneven surface.

The rubber lining at the time of molding merges with a piece of stainless steel sheet, which comes on the junction of the repair clamp, so it would prevent the rubber distortion when tightening clamp, providing an effective seal all around the pipe.

Pipe repair clamps are used for reparation of the damaged pipes, without the need of cutting and re-insertion of a pipe part. They can also be used in case of fine cracks or joining the two ending parts of pipes. These elements allow angular misalignment up to 4° and axial deviation up to 3 mm. In addition, they can also be used for joining of pipes with different diameters, up to 2 mm, which is preferred when joining asbestos pipes from different manufacturers.



The maximum working pressure of the repair clamps depends on the type of pipes, dimensions and condition of pipe work, clamp type (single clamp, double clamp, triple clamp, etc), the length of clamp, the type and size of the damage, as well as the conditions of servicing. In general, the allowable working pressure increases as the diameter decreases, so that the pipes up to DN 80 have working pressure of 25 bar, pipes up to DN 150 have pressure of 16 bar, and pipes over DN 175 can have pressure of 10 bar.

The advantages of using pipe repair clamps "Atlantik" are as follows:

- quick and easy installation
- requirement of little excavation work during installation
- minimum tools necessary
- fully prepared for emergency interventions without additional post-processing
- made out of strong, durable stainless steel sheet metal
- minimal engagement of workforce
- lightweight and easy to handle
- able to adapt to pipe irregularities or ovality
- can be used to repair pipe or joint pipe ends
- available for all pipe types and sizes
- no need for specific preparation of damaged pipes

ATLANTIK SINGLE CLAMP

These are the basic type of clamps produced for pipe diameters from 50 to 280 mm. Standard clamp's length is 200 mm, but they also come in lengths of 250, 300 and 400 mm. One-sided connection with 4 screws, provides faster and easier installation and lower price, compared to multi-part clamps for pipes of the same diameter.

**ATLANTIK DOUBLE CLAMP**

The body of these clamps is made out two parts and enables two-sided connection, resulting in a higher resistance to the pressure. They are produced for pipe diameters from 80 to 600 mm, by the lengths of 200, 300 and 400 mm.

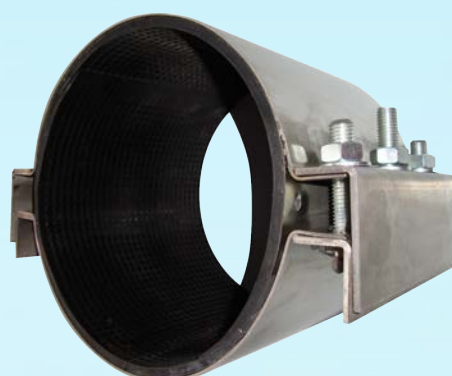
**ATLANTIK TRIPLE CLAMP**

These clamps consist of a three-part body and have a three-way binding, which makes them very appropriate for high operating pressures (up to 25 bar). They are produced for pipe diameters from 250 to 800 mm.

On customer's request, we also produce four-part and five-part clamps..

**ATLANTIK STRONG**

This type of repair clamp is designed for the reparation of high-pressure pipeline. The body of the clamp is reinforced at its ends and screws are made out of stronger material compared to standard clamps. These are available only as a multi-part clamps, with lengths of 200, 300 and 400 mm..



ATLANTIK MINI CLAMP

They can be used for minor reparation of the pipe work, produced solely as a one-piece fittings for pipe diameters from 22 to 90 mm. They are made out of stainless steel sheet metal of 1 mm thickness, with M10 bolts, and the length of 100 mm, this makes them stronger and more reliable than any other that can be found on the market.

**VEKTOR SINGLE CLAMP**

Vektor clamp can be used as an economical alternative to the Atlantik single band clamp. They are produced for pipe diameters from 50 to 280 mm, and are available in 200, 250 and 300 mm lengths. They are suitable for working pressures up to 10 bar for diameters up to DN 150, and 6 bar for diameters up to DN 250.

**VEKTOR MINI CLAMP**

These are more cost-effective alternative to Atlantik Mini clamps. They are produced for pipe diameters from 22 to 63 mm, 70 mm in length. Maximum working pressure is up to 10 bar.



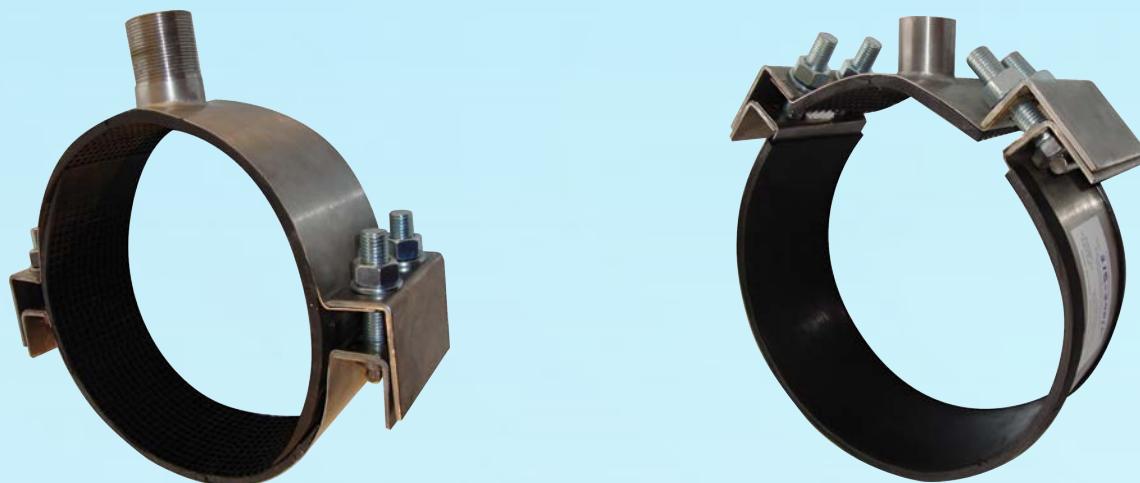
ATLANTIK TAPPING CLAMPS

This type of fitting allows the simultaneous reparation of damaged pipes, and at the same time, obtaining an external connector for the pipe. It can also be used for new installations. Clamp and outlet are made out of stainless steel (AISI 304 quality), with the TIG-weld with clamp's body. After welding all Stainless Steel parts are passivated to ensure optimal corrosion protection. Tapping clamps can be equipped with a threaded socket or nipple with dimensions of 1/2" to 4". They are produced as single clamps with a diameter of 60 to 250 mm, and double clamps for the diameters of 88 to 600 mm. Clamp's length may be 100, 150, 200, 250, 300 and 400 mm. The combination of quality materials and superior design, made that this fitting has a wide application in different kind of industries.

**ATLANTIK STAINLESS STEEL TAPPING SADDLES SSS.**

These are an economical alternative for tapped clamps. It is suitable for making connections to valves, T joints, shut-of valves, pipe and conduit fittings, etc. The package ships with a outlet of 1/2" to 3" with a threaded socket or nipple.

Flexible saddle's body allows quick and easy installation. It is produced for pipe diameters from 60 to 600 mm.

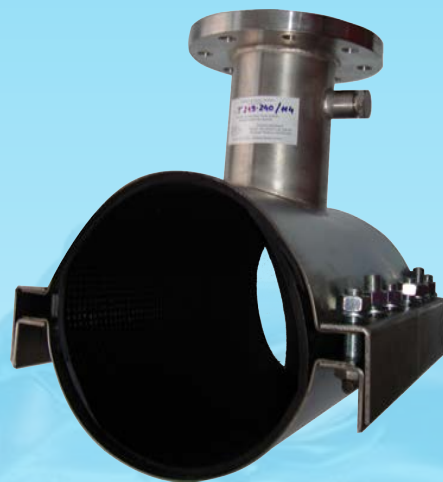


ATLANTIK STRONG TYPE T TAPPING TEE

It is used for making flanged connections under pressure on the main pipe line, or to repair existing T-connections. Tapping TEE eliminates the need for cutting and wrapping the T-pieces, which allows an inexpensive and quick intervention, without the need to cut off water supply.

It is produced for pipe diameters from DN 80 to DN 800, flanged fitting from DN 50 to DN 200.

Tapping TEE's length can be 300, 400 and 500 mm, or longer, upon customers' requests.

**ATLANTIK HOLDERS**

They are used as an additional security of pipe connections.

These are particularly suitable for the compounds, which are exposed to vibrations (e.g., vibrations by traffic), or a landslide.

They are produced for pipes from DN 80 to DN 600.

**LATCHED COLLAR**

It is used as a link between the main water supply and internal building plumbing.

The advantage of this collar is that during the assembly period, the water supply network remains under normal pressure.

Mounting can be performed on PVC, steel, asbestos-cement or cast iron pipes with diameters ranging from 63 to 315 mm.



MAXIFIT PIPE COUPLINGS

Viking Johnson – England

MaxiFit (universal pipe couplings) have a wide range of couplings designed to connect pipes of the same nominal width, but different outer diameter and materials (e.g. connection of asbestos-cement and steel pipes, or cast-iron or PVC pipes), as well as connecting the pipes made of same material. That is why they are known as transition couplings, because they allow a transition from one material type to another. They can also connect pipes of the same outer diameter to each other.

MaxiFit (Multifit) pipe coupling consists of the body, two end rings (clamping flanges), rubber gasket and (two) clamping screws. End ring and adaptor body are made out of ductile cast iron (DCI) GGG 45 in accordance with EN-GJS-450-10 standards. The coupling is coated with the organic coating based on Rilsan Nylon (Nylon 11), which is WRAS approved for use with potable water. Bolts and nuts are protected by Silver Sheraplex and can be stainless steel or coated with Teflon optionally.



The minimum and maximum range of MAXIFIT pipe couplings and maxiadaptor-flange adaptors

Pipe fittings range		
DN	MIN.	MAX.
50	57	74
65	63	85
80	85	107
100	107	132
125	132	158
150	158	184
175	189	212
200	218	244
225	243	269
250	266	295
300	315	349
350	351	368
350	374.5	391.5
400	404.8	421.8
400	418.2	435.2
400	425	442
400	434.5	451.5
450	447	464

MaxiDaptor Flange Adaptors**Viking Johnson – England**

Flange adaptors are designed to join various types of plain end pipes with flanged parts. Flange adaptors consist of the flanged body, end ring (two clamping flanges), rubber gasket and two clamping screws. End ring and adaptor body are made out of ductile cast iron (DCI) GGG 45 in accordance with EN-GJS-450-10 standards. Coated with the organic coating, based on Rilsan Nylon (Nylon 11) is WRAS approved for use with potable water. Bolts and nuts are protected by Silver Sheraplex and can be stainless steel or coated with Teflon optionally. They are produced for pipe diameters ranging from 60 to 600 mm.

**AQUAFast PIPE COUPLINGS AND FLANGE ADAPTORS****Viking Johnson – England**

These are used to connect PE and PVC pipes. Unlike MaxiFit couplings and Maxidaptor Flange Adaptors, Aquafast couplings and adapters have a gripper for safe connection of PE and PVC pipes. They are produced for the following pipe diameters: 63, 75, 90, 110, 125, 140, 160, 180, 200, 225, 250 and 315 mm.



UltraGrip pipe couplings and Flange Adaptor **Viking Johnson – England**

It is designed to connect pipes of all material types. They have a very wide range (up to 44 mm) and are equipped with specific sealing system, consisting of a specially designed rubber rings and plastic segments, which ensure the proper seal, even on a extremely damaged pipes with rough surface. Its segments are coated with abrasive material that provides a secure connection, without damaging the tube's surface.



The minimum and maximum range of Ultragrip fittings and flange adaptors

Pipe fittings range		
DN	MIN.	MAX.
50	48	71
65	63	83
80	86	107
100	107	133
125	133	160
150	158	192
200	218	256
250	267	309
300	315	256
350	351	368
350	352.2	396
400	398.2	442

Support liners**Viking Johnson – England**

Support liners are stainless steel inserts, which are used when installing ultragrip and multi joint fittings on PE and PVC pipes.

These support liners, which are mounted inside the pipe, prevent pipe deformation, and at the same time, giving it a perfect shape, thus ensuring high-quality and reliable mechanical joint of flexible pipes such as PE pipes, as well as thin-walled PVC pipes.

Its length can be 300, 400 and 500 mm, or higher upon customer's request.

**Pipe repair clamp Atlantik Flex**

Atlantik flex (repair clamp) is designed for reparation of damaged pipes, as well as pipe connection, where there is an angular deflection from 3° to 5°, or axial deflection between the two pipes up to 3 mm. It is suitable for pipes under pressure, and up to 16 bar.



